



“Women Power, Beauty, and Self-Development: Kababaihan, Kagandahan, at Kalinangan”.

March 6, 2023



Dr. Aldrin A. Darilag **CHRP, RMT, RN**
Commissioner
Commission on Higher Education

**“Women Power, Beauty, and Self-Development:
Kababaihan, Kagandahan, at Kalinangan”.**

we recognize and
celebrate women and
girls who are champions
for the advancement of
transformative
technology and digital
education.



Number of Operations	Nature of Operations	Variables for Data						Working Variables							
		1V_0	1V_1	1V_2	1V_3	1V_4	1V_5	0V_6	0V_7	0V_8	0V_9	${}^0V_{10}$	${}^0V_{11}$	${}^0V_{12}$	${}^0V_{13}$
		+	+	+	+	+	+	+	+	+	+	+	+	+	+
		0	0	0	0	0	0	0	0	0	0	0	0	0	0
		0	0	0	0	0	0	0	0	0	0	0	0	0	0
		0	0	0	0	0	0	0	0	0	0	0	0	0	0
		0	0	0	0	0	0	0	0	0	0	0	0	0	0
		m													
1	x	m'													
2	x	m'													
3	x	d						d'							
4	x	m'													
5	x	m'													
6	x	0		0								d'			
7	-							0	0					mn'	
8	-								0	0					
9	-											0	0		
10	+														mn'
11	+														

Ada Augusta Lovelace

the first ever computer programmer and creator of the first computer algorithm

$$\frac{d'm - d'n'}{m'n - m'n} = \gamma$$





Hedy Lamarr

Lamarr is considered to be the Mother of Wireless Fidelity.

A woman with dark, curly hair, wearing a light-colored blazer and a matching high-collared blouse, stands in a control room. She is looking slightly to her left. The background is a wall of a control panel with numerous switches, lights, and labels. Labels include 'CW13', 'CW11', 'W2', 'W10', 'W5', 'W6', 'CW7', 'CW5', 'CW3', 'CW1', 'SW1', 'SW5', 'SW7', 'SW11', 'SW12', 'SW13', 'SW14', 'SW15', 'SW16', 'SW17', 'SW18', 'SW19', 'SW20', 'SW21', 'SW22', 'SW23', 'SW24', 'SW25', 'SW26', 'SW27', 'SW28', 'SW29', 'SW30', 'SW31', 'SW32', 'SW33', 'SW34', 'SW35', 'SW36', 'SW37', 'SW38', 'SW39', 'SW40', 'SW41', 'SW42', 'SW43', 'SW44', 'SW45', 'SW46', 'SW47', 'SW48', 'SW49', 'SW50', 'SW51', 'SW52', 'SW53', 'SW54', 'SW55', 'SW56', 'SW57', 'SW58', 'SW59', 'SW60', 'SW61', 'SW62', 'SW63', 'SW64', 'SW65', 'SW66', 'SW67', 'SW68', 'SW69', 'SW70', 'SW71', 'SW72', 'SW73', 'SW74', 'SW75', 'SW76', 'SW77', 'SW78', 'SW79', 'SW80', 'SW81', 'SW82', 'SW83', 'SW84', 'SW85', 'SW86', 'SW87', 'SW88', 'SW89', 'SW90', 'SW91', 'SW92', 'SW93', 'SW94', 'SW95', 'SW96', 'SW97', 'SW98', 'SW99', 'SW100'. There are also some framed pictures on the wall. The overall scene is a classic representation of a woman in a technical or scientific profession.

Annie Easley

Centaur project, which helped
make future space travel possible.



Karen Spack-Jones

**that served as springboard
for the realization of modern
search engines we are now
enjoying today**



Radia Perlman

that served as springboard for the
realization of modern search engines
we are now enjoying today.

A photograph of Susan Wojcicki, CEO of YouTube, speaking. She is shown from the chest up, in profile, looking towards the right. She has shoulder-length brown hair and is wearing a dark blazer over a light blue sweater. Her right hand is raised in a gesture, with fingers slightly spread. The background is dark and out of focus.

Susan Wojcicki

She's served as an inspiration to young women everywhere based on her hard work, tenacity, and success in the tech industry.

Reshma Saujani



founder of “Girls Who Code”, an organization committed to diversity and inclusion of girls in technology, where she is also an activist and a lawyer, who worked steadfastly to close the gender pay gap.

A black and white photograph of Marie Curie sitting in a wooden chair in her laboratory. She is wearing a dark, long-sleeved dress and has her hand resting on her chin, looking thoughtfully towards the camera. The laboratory is filled with various scientific instruments, including a large apparatus on a table to her left and a window in the background. The lighting is soft, highlighting the textures of her clothing and the equipment.

Marie Curie

who conducted pioneering
research on radioactivity.



**Dr. Sarah Gilbert, Dr. Kizzmekia Corbett, and Dr. Katalin Kariko
who played significant roles in the development of vaccines**



Dr. Fe del Mundo

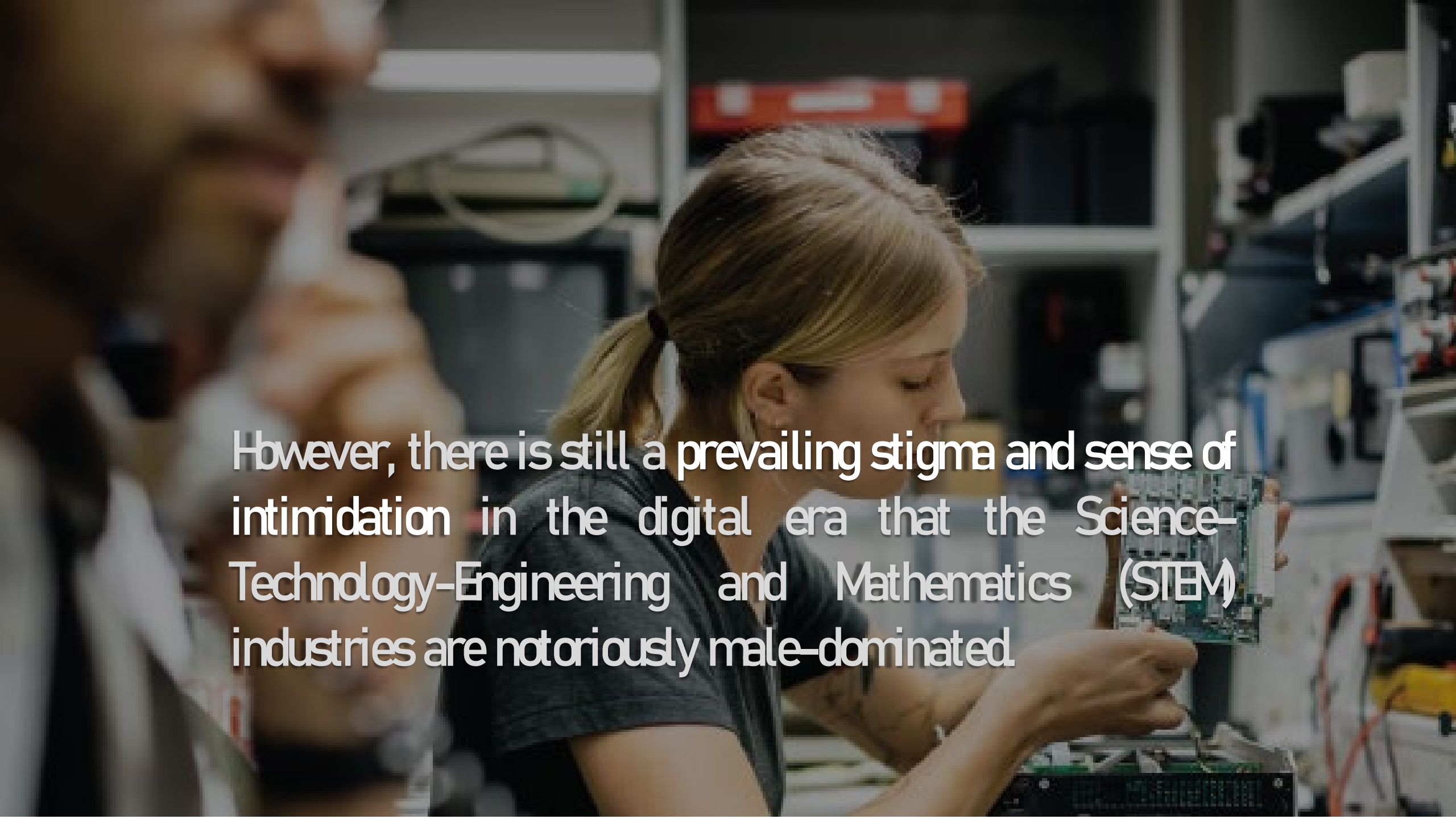
invented a bamboo incubator to support families in rural communities cope with the daily living even without the supply of electricity



Dr. Mercedes Concepcion

whose research covered the fields of fertility, mortality, employment, labor force, *women's development*, and population structure.

“Expert of Asian Demography”

A woman with blonde hair in a ponytail, wearing a grey t-shirt, is focused on working on a green circuit board. She is in a laboratory or workshop environment with various pieces of equipment and shelves in the background. The text is overlaid on the image in a white, sans-serif font.

However, there is still a prevailing stigma and sense of intimidation in the digital era that the Science-Technology-Engineering and Mathematics (STEM) industries are notoriously male-dominated.



As reported by Plan International Organization, the gender digital divide in access to the internet among the least developed countries remains largest in the world at 32.9%.





only 30 percent of tech science
and technology professionals
are women.



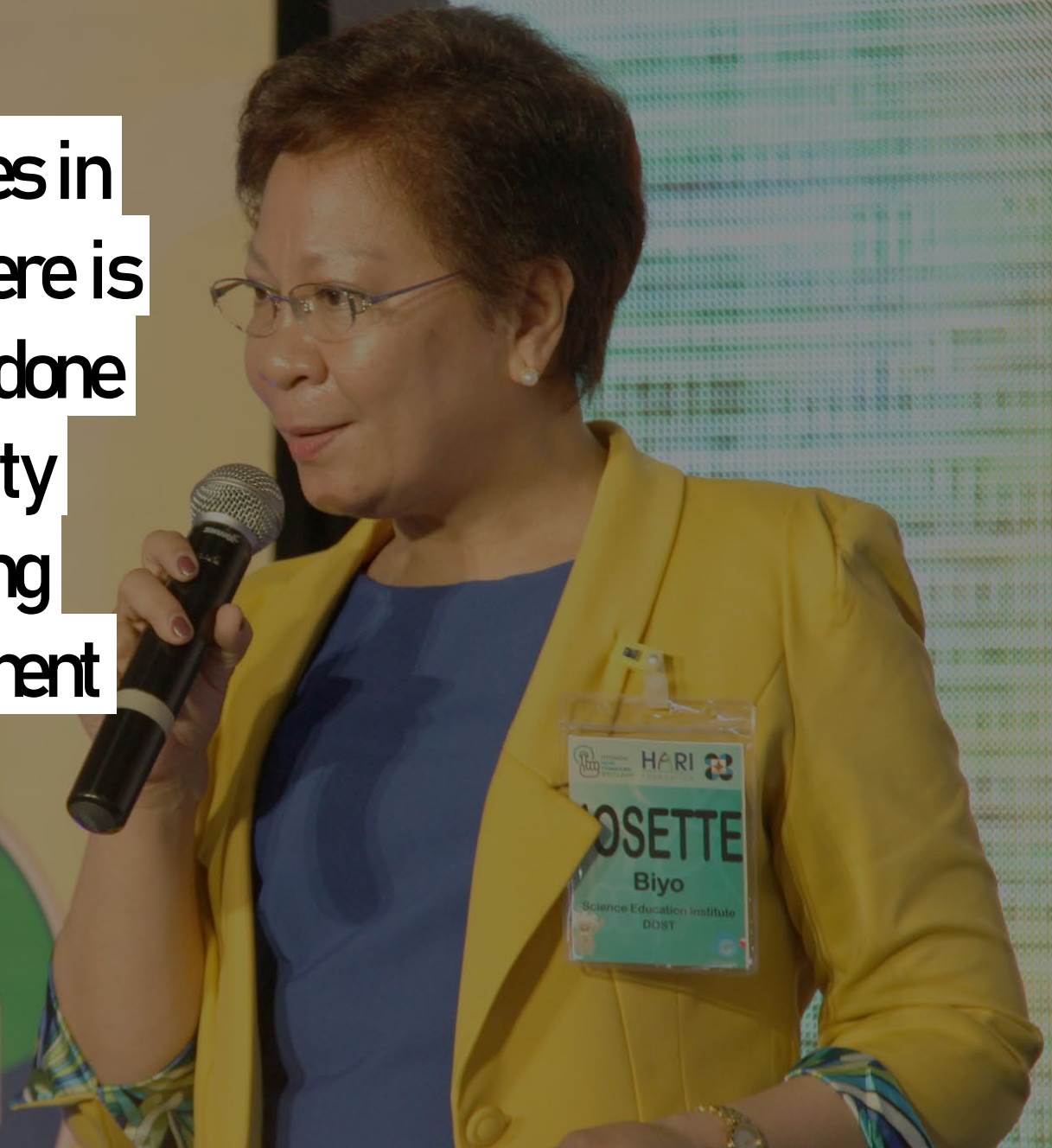
Filipina girls
demonstrated that
loss of interest in
STEM subjects started
as early as age 10



it is imperative to revitalize our institutional cultures in taking big steps and initiatives to show and support women their equal rights and opportunities in the field of technology and innovation



“While we have made great strides in empowering Filipinas in STEM, there is much work that still needs to be done not just in terms of gender equality but also towards further improving access to education and employment opportunities





INNOVATION AND TECHNOLOGY FOR GENDER EQUALITY

#IWD2023



6-17 March 2023

 **CSW67**

COMMISSION ON THE STATUS OF WOMEN

INNOVATION AND TECHNOLOGICAL CHANGE

EDUCATION IN THE DIGITAL AGE

Progress toward gender equality

Despite being underrepresented in STEM professions, women have made some massive contributions with technology over the years

The Women Who Changed The Tech World




A woman in a dark, sleeveless, patterned dress is leaning over a long, polished wooden conference table. She is looking down at a laptop computer on the table. The table is surrounded by several modern office chairs. The background is a bright, minimalist office space with white walls and a large window. The word "BUSINESS" is overlaid in large, bold, white capital letters across the center of the image.

BUSINESS

A woman with long brown hair, wearing a blue dress, is smiling and holding a light-colored hat. She is standing in a clothing boutique. To her left is a black metal clothing rack filled with various garments on hangers. To her right is a mannequin wearing a large white hat and a brown woven top. In the foreground, there is a desk with a laptop and a small potted plant. The background is a plain wall.

more Filipino women are engaged in marketing management and online selling platforms, specifically in live selling



this causes awareness to young ladies who are to explore the beauty industry while developing a sense of nationalism in choosing and using our own local products, thus, making these beauty products *glocalized*



ADVOCACIES



Stronger Together

S.T.O.P
VICTIM
BLAME

#MeToo
survivors' march
Nov 12th 10am-3pm
Hollywood & Highland
bit.ly/metoomarch
#MeTooMarch #EndTheStigma

NO
IT
APE
EAR

#MeToo
survivors' march

MeToo
survivors' march
highland
stigma



#Me Too

vors' march

me too.

CALIFORNIA



WITECH


Celebrating Women in Technology

est. 2016



we, as GAD
advocates, continue
to promote gender
equality, diversity
and inclusivity in line
with Digital
Transformation and
Fourth Industrial
Revolution





as impetus of innovations, leaders in technological development and the beacon of hope and academic excellence in this knowledge-based economy.



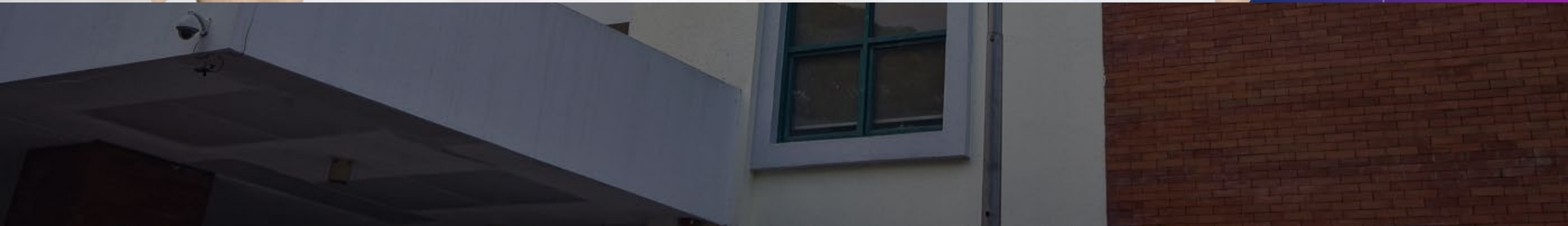
The Commission on Higher Education is an agency that advocates women empowerment and Gender Equality, Diversity and Inclusivity



**Philippine
Commission
on Women** 

GADtimpala

Gender and Development Transformation & Institutionalization through
Mainstreaming of Programs, Agenda, Linkages & Advocacies





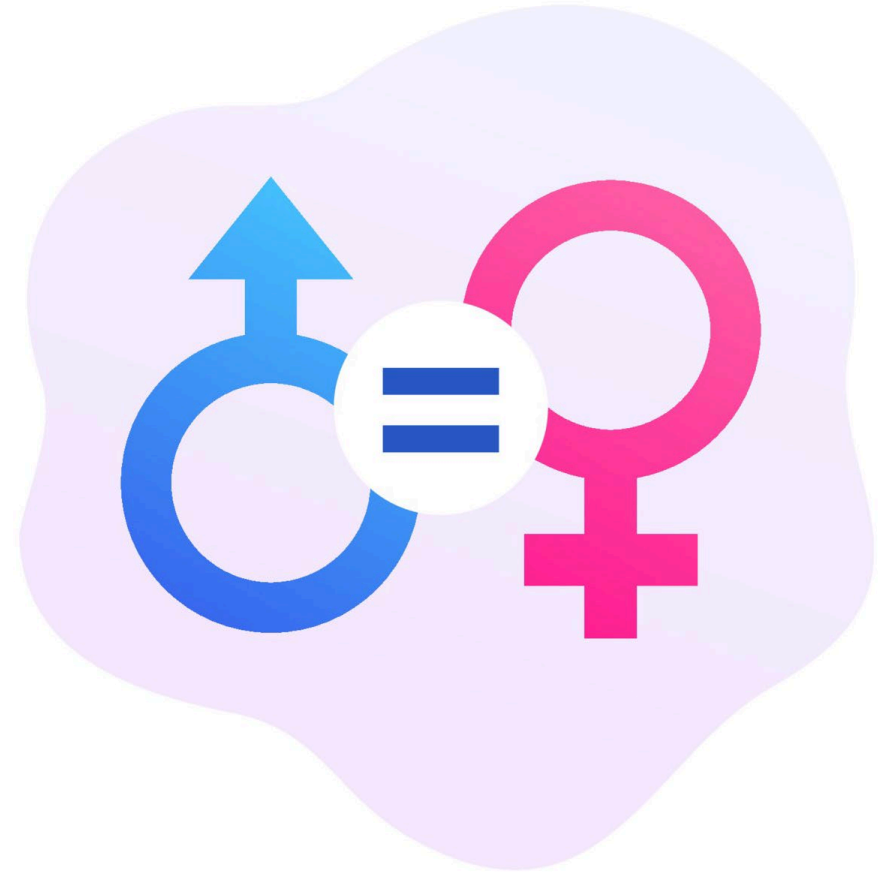
Join the **Commission on Higher Education**
in the launching of the

NATATANGING KABABAIHAN SA EDUKASYON AWARDS 2022

03.28.2022

C
H
E
D

thorough – which connotes that rigorous scientific research has been done;
comprehensive – all data have been considered together with possible options to the project;
and objective – that bias and conflict of interest are omitted





the Philippine government remains steadfast in providing quality services to our frontliners



equitable education system for everyone

**As GAD oversight commissioner,
my vision is for this educational
system to be implanted with
empowered women without
boundaries and whose dreams
are meant to be fulfilled.**





“Women Power, Beauty, and Self-Development: Kababaihan, Kagandahan, at Kalinangan”.



Dr. Aldrin A. Darilag **CHRP, RMT, RN**
Commissioner
Commission on Higher Education